



JMobile Docker Container User Manual

UMXX (v1.0) – 3 Nov 2016

User Manual:

Overview

This document will guide user through the installation and usage of JMobile Docker container for x86 platforms.

The reproduction, transmission or use of this document or its contents is not permitted without express written authority. Offenders will be liable for damages. All rights, including rights created by patent grant or registration of a utility model or design, are reserved. Technical data subject to change. All trademarks and trade names appearing in this document are property of their respective owners. Copyright © 2015 Exor International SpA-Verona-Italy, All Rights Reserved. **Disclaimer** Exor International SpA is providing this design, code, or information "as is." basis, without warranty of any kind, either expressed or implied, including, without limitation, warranties that the covered code is free of defects, merchantable, fit for a particular purpose or non-infringing. Each party bears the entire risk as to the quality and performance of the original code, upgraded code, and modifications, to the extent originating with and provided by such party. Should any covered code prove defective in any respect, you assume the cost of any resulting damages, necessary servicing, repair or correction. This disclaimer of warranty constitutes an essential part of this license. No use of any covered code is authorized hereunder except subject to this disclaimer.

1 Prerequisites

A x86 Linux machine with Docker v1.6.2 or greater installed is required. To install it on a Ubuntu/Debian distribution apt-get can be used:

```
$ sudo apt-get install docker.io
```

Ports 8585/tcp, 2121/tcp, 990/udp and 991/udp (and optionally 5911/tcp) must not be in use.

Root privileges are required.

2 Installation

- 1) Extract the JMobile Docker package:

```
$ mkdir dockerExor  
$ tar xzvf JMDocker-[...].tar.gz -C dockerExor  
$ cd dockerExor
```

- 2) Install the Docker image and create a container named "jmobile":

```
$ sudo ./install.sh
```

3 Running the Docker image

Start the container:

```
$ sudo ./start.sh
```

The container will stop when JMobile is closed. To close it from shell:

```
$ sudo docker kill jmobile
```

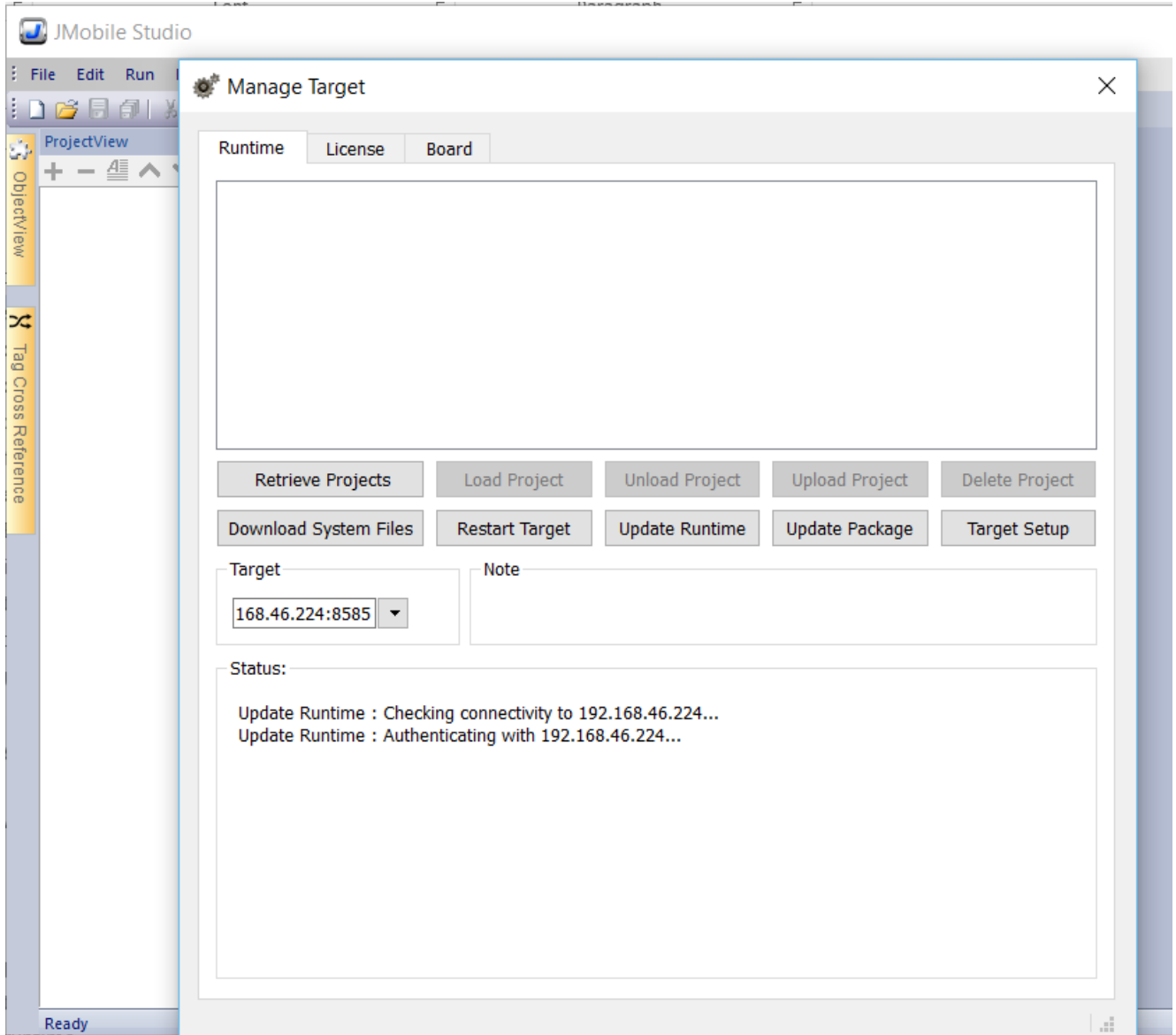
The JMobile native interface will popup if a x11 desktop is already available. Otherwise a virtual X11 server is started and user can connect to native JMobile interface by VNC on port 5911.

JM4Web interface is available at port 8585.

4 Updating JMobile runtime

First installation comes with a preinstalled version of JMobile.

New versions can be installed using JMobile studio manage target dialog:



Upon installation completion, the container terminates and must be restarted as described in previous section.